



## Your monthly update on WMS News and Events

### Chairman's Foreword:

*"Greetings All, it is always a good opportunity in this short opening to the Journal to say thank you to members for making our Shed such a success story. A lot of work goes on in the background to ensure things happen.*

*John Chamberlin for his work on producing the Journal each month, his dedication to work as Membership Secretary and Treasurer. Jeff Heath, John Bunning, and team for their efforts in the Computer Workshop for bringing extra funds for the Shed. Stewart Haile for his work as our Secretary and for organising the Shutterist group and the Car Pub Club. Nigel Potter for organising and running the Music and Shanty groups. Richard Adams and team in the Woodwork Shop for their work in projects around the sports centre and other requests. Also, a big thanks to ALL members for just being a part of the shed and turning up."*

*Malcolm Trayhorn - Chairman*

### **Editor's note:**

*Malcolm is always thanking others for their efforts but of course would not thank himself. So, on behalf of ALL Men's Shed members may I thank him for his tireless efforts in all he does for the Shed. Of course, Malcolm would always say it's a team effort, and it is, but I'm sure you all agree he more than deserves the accolade.*

### **Editorial: (Fresh articles needed for publication please.)**

*"Welcome to issue 18 of "THE SHED JOURNAL".*

*Please bear in mind that this is your publication and without contributions from members we are in danger of the Journal becoming somewhat staid in its content/presentation. The more of you who contribute the more interesting and diverse we can make it.*

*Therefore, if you can think of anything interesting or informative to include i.e., Scams, DIY/Gardening tips, good/bad tradesmen, a review of something you purchased or maybe a film, book, or music review. Please feel free to send me your ideas and I will consider them all.*

*If you come across an interesting article (not too lengthy) then please forward it to me. Members are also welcome and indeed encouraged to contribute small articles themselves (around 300 words with pictures) of days out, holidays, life/work experience, hobbies etc. I'm sure we all have a story to tell.*

**Note:** Political, Financial and Religious articles will be closely scrutinised before publication. However, defamatory articles will not be published.

*As I am far from infallible, please advise of any errors/typos and feel free to send me your comments, good or bad. I strive to please. If you prefer not to receive 'The Shed Journal' please let me know by return."*

*John Chamberlin - Editor - email: [bjcoi8@gmail.com](mailto:bjcoi8@gmail.com)*

### **In Memorium: - Brian Pugh**

It is with much sadness that we report the loss of one of our members. Brian sadly passed away after a recent operation for cancer and our thoughts are with his wife Penny and her family. He joined the shed in February 2020 and was a valued member. Anyone who knew Brian and wishes to attend his funeral it will be held at Scoulton crematorium on Tuesday 28<sup>th</sup> February at 10 a.m.





# The Shed Journal



## Latest News on Shed Facilities and Amenities:

### Main Social Room:

*"The Main Social Room is where the larger part of our membership congregates to catch up with fellow shedders over a cup of tea/coffee. Groups develop for a game of cards, dominoes, or such like although this is not all that goes on. Other groups may sit chatting about whatever comes up or perhaps read a magazine. All are a friendly bunch and welcome other members to join in the conversation and banter.*

*After signing in, the Computer and Workshop shedders will drift off to the outbuilding to take up their interests."*

**Members are reminded that it is important to come to the social room to sign in and out.**

[John Chamberlin](#) – Editor

### The Carpentry Workshop:

*"The past couple of weeks has brought some new members into the workshop which is good news, with the cold and frosty mornings this has understandable kept one or two at home in their beds and who can blame them. we have a steady flow of jobs coming in to keep us busy and the kettle has been working overtime."*

[Richard Adams](#) – Workshop Supervisor - 01953 881004

### The Computer Room:

*"Hello fellow techies,*

*I, hope I find you all looking forward to the spring weather. It looks like the computer group are getting back up to speed and looking forward to the year ahead, having said that maybe till June 2023, when we have our AGM, as you will know the appointments of each committee member is for 12 month only, so it would be nice to have your support so that the current team can continue to support the WMS and its membership.*

*The team and I would like to wish John Woods the very best in his new Job, John has been telling us all about what hopes to do in the future, and it sounds very exciting, it makes me wish I wasn't retired. If anyone has any questions on Linux operating systems or any other problems you may have then speak to John, he is normally around between 10.00 and 12.00.*

*Talking about other members of the team, I would like to welcome two new members, John also a keen bowler tells me that he knows nothing about computers but is willing to learn. I would like to say that it doesn't matter, and you have no worries, we will make a techie of you yet. Our next new member is Nick (who is new to the area) and looking forward to moving into his new home in Watton with his wife shortly. Nick comes with varying skills and experience in the electrical trade so hopefully he will be able to help the computer group develop to a higher level.*

*As before, if any member wishes to join the computer group or you have just joined WMS, you will be made most welcome. To start with you can join the team members that dismantle computers and later we can introduce you to building a desktop computer from the ground up, learning all the hardware, and software required to make the computer work, as we go.*

#### **Your help required.**

*If you have any experience on Laser Printers, then the team will be pleased to hear from you.*

*Till the next time, take care."*

[Jeff Heath](#) - Computer Group Supervisor - email: [jefferyheath2017@yahoo.com](mailto:jefferyheath2017@yahoo.com)





# The Shed Journal



## Trivia, Quiz & Puzzle corner:

### February in history:

1587 - Mary Stuart - Queen of Scots was beheaded after 19 years as a prisoner of Queen Elizabeth I.  
 1829 - Geronimo - Apache Chief dies. After raids in Arizona and New Mexico. 5,000 soldiers were sent to capture him.  
 1929 - St. Valentine's Day massacre. Members of the Bugs Moran gang, gunned down by Al Capone's mobsters.  
 1952 - King George VI dies. Elizabeth became Queen, her 70-year reign was 2<sup>nd</sup> only to Louise XIV of France.  
 1962 - Astronaut John Glenn became the first American launched into orbit. Alan Shepard was the first into space

### February born into glory or infamy:

1473 - Nicolaus Copernicus - Astronomer - He theorized that the sun, not earth was the centre of the solar system.  
 1809 - Abraham Lincoln - The 16th U.S. President. He led the nation through the Civil War freeing the slaves.  
 1846 - 'Buffalo Bill' Cody - American frontiersman - He claimed to have killed over 4,000 buffalo within 17 months.  
 1847 - Thomas Edison - U.S. inventor. Patented the incandescent bulb, phonograph, and movie camera.  
 1902 - Charles Lindbergh - Aviation pioneer - He made the first Transatlantic non-stop solo flight in 1927.

#### Joke

What's the difference between a Hippo and a Zippo?

#### Puzzle



Name the song and the artist.

#### Quote:

*"What kind of people do they think we are? Is it possible they do not realize that we shall never cease to persevere against them until they have been taught a lesson which they and the world will never forget?"*  
 Winston Churchill.

#### Proverb:

A hundred noes are far less agonizing than a single insincere yes.

## The Six W's Quiz:

#### Which

famous character from history is most associated with this poker hand?



#### What

word is used for the point where two or more major rivers merge?

#### Why

was the 'Magna Carter' written?

#### When

was this unique form of transport invented?



#### Where

in the world would you be if you were passing over the Mariana Trench?

#### Who

is said to have uttered these immortal Latin words?  
 (Alea iacta est)  
 'The die is cast'.

## Last thoughts:

**That's odd:** Give the odd one out:

Bob Cratchit, Edward Rochester, Uriah Heep, Fanny Dorrit?

**Line up:** Give the next in line:

Hooover, Roosevelt, Eisenhower, Kennedy, ?

**MIA:** Give the missing item:

Ontario, Superior, Michigan, Erie, ?

*"Answers are shown on the last page, please advise of any typos or errors."*

John Chamberlin - Editor





# The Shed Journal



## Social programme:

Our social secretary, Malcolm Trayhorn is very adept at organising an excellent programme of events throughout the year. The fact that many of these end up oversubscribed is a testament to their popularity.

I'm certain however, that Malcolm would greatly appreciate suggestions and ideas for future events and outings from the membership, so please put your thinking caps on for 2023. Suggestions to Malcolm please.

*Malcolm Trayhorn* - 01953 529531 - email: [malcolm.trayhorn@gmail.com](mailto:malcolm.trayhorn@gmail.com)

## Recent events:

The year is still very much in its infancy so recent events have been few and far between. However, watch this space for reports of the many 2023 events organised by our own very capable Malcolm Trayhorn.

## Upcoming events:

### Battle of Britain Memorial Flight Visitor Centre

This event is now fully booked for Thursday 28<sup>th</sup> February.

### Ten Pin Bowling

It is proposed that we have a trip to Strikes in Dereham on Tuesday 21<sup>st</sup> February at 2pm. This will be a car share event and the cost for two games, a snack & drink is around £8. Names to me or on noticeboard please.

### Cromer Pier Show

I have 40 tickets available for the matinee performance of the end of pier show on Friday 14<sup>th</sup> July. Cost of tickets plus coach fare will be approx. £30 per person. Names to me or on noticeboard please plus a £10 per person deposit.

### Thursford Christmas Spectacular

I have 50 tickets available for the evening performance on Tuesday 5<sup>th</sup> December. Cost of tickets plus coach fare will be approx. £50 per person. Names to me or on noticeboard please plus a £10 per person deposit.

### Christmas Meal

After last year's successful event it is proposed that we go back to Barn Ruche again this year. So, a date for your diary is Thursday 14<sup>th</sup> December.

## Other suggestions are:

A summer Bar-B-Q    Bletchley Park    Yarmouth Dogs    Fakenham Races

**Please watch the notice board for further updates, future events or to register your interest.**

## Upcoming Social Calendar:

Event	Date	Venue	Time	Cost (Subject to variation)
Ten Pin Bowling	Tuesday 21 <sup>st</sup> February	Strikes, Dereham via car share	2 p.m. Depart Watton 1.15 p.m.	£8 per head
Battle of Britain Memorial Flight Visit	Tuesday 28 <sup>th</sup> February	R.A.F. Coningsby, Lincs. Via coach	10 a.m. Depart Watton 7.45 a.m.	£18.50 per head
Cromer Pier Show	Friday 14 <sup>th</sup> July	Cromer via coach	TBC	Est. £30 per head
Thursford Christmas Special	Tuesday 5 <sup>th</sup> December	Thursford via coach	TBC	Est. £50 per head
WMS Christmas Meal	Thursday 14 <sup>th</sup> December	Barn Ruche	TBC	TBC

*Malcolm Trayhorn* - 01953 529531 - email: [malcolm.trayhorn@gmail.com](mailto:malcolm.trayhorn@gmail.com)





# The Shed Journal



## Member groups:

### Editor's note on groups:

Do you have an idea for a similar group? For example: A walking group, book club, cycling club, games group, a common hobby or interest then please email me the idea - [bjcoi8@gmail.com](mailto:bjcoi8@gmail.com) and I will publish it here.

Such groups will be fully supported by the committee but arranged and run solely by the interested members.

**N.B.:** A group does not have to be several members; you may just find one other like-minded individual to start with and others may well join you later.

### The Music Club:

*"Music Club members met on the 1<sup>st</sup> of February to play their latest music choices. The optional theme for the month was 'Air'. After playing, each track is then scored by each member according to how much they liked it. The top five most popular on the day were as follows:*

1. 'The Air That I Breathe' as performed by The Hollies. (95 votes)
2. 'Something in The Air' performed by Thunderclap Newman. (93 votes)
3. 'Air on a G String' (J S Bach) (87 Votes)
4. 'The Northumberland Air' performed by Kathryn Tickell. (84 votes)
5. 'Going to California' performed by Led Zeppelin. (77 votes)

*The February meeting marked the first anniversary of the Music Club. Where has that year gone? It has proven to be a successful venture thanks to the efforts of attendees to bring along music that is stimulating (and sometimes challenging) to listen to. The top tracks from the past year illustrate the diversity of music played:*

- 1=. 'Good Vibrations' – The Beach Boys
- 1=. 'Going Home' – Mark Knopfler
3. 'Somewhere Over the Rainbow' – Ella Fitzgerald
4. 'The Hornpipe Air' – From Handel's Water Music
- 5=. 'Sloop John B' – The Beach Boys
- 5=. 'Hallelujah Chorus' – London Philharmonic Orchestra & Chorus
- 5=. 'Back Water Blues' – Bessie Smith

*The Club is open to all Shed Members to either bring along their own tracks to play or just to listen to the selections of others. All genres of music are welcome. The Club meets on a monthly basis throughout the year – normally the first Wednesday in the month and starting as soon as possible after 10 o'clock. There is no additional charge other than the usual £2 Shed sub payable in the social room.*

*The next listening session will be on 1<sup>st</sup> March in the back room off the Bar (the door next to the pool table). The optional theme for the month is 'Music for the 10-mile tailback'. If you are interested in coming to the Music Club or just want more information you can contact me by email or say 'Hello' next time you see me in the shed social room on a Monday morning. Alternatively, just turn up at the next meeting – you will be made most welcome."*

**Interested?** Contact [Nigel Potter](mailto:Nigel Potter) – Music club lead - email: [silveralto@gmail.com](mailto:silveralto@gmail.com)

### The Shanty Group:

*"The Shanty Group continues to go from strength to strength and is now rehearsing on a twice monthly basis; namely, the first Monday and the third Wednesday of the month. At present efforts are focussed on learning harmonies and polishing performance of a small core of songs so that they can be safely 'banked' before moving on to new songs.*

*The next sessions will be on Monday 6th March and Wednesday 15th March 2023 in the back room behind the bar starting as soon as possible after 10 o'clock. There is no additional charge other than the usual £2 fee for attending the Shed. Why not come along and give it a go? You don't have to be a good singer or read music – you will be made most welcome."*

**Interested?** Contact [Nigel Potter](mailto:Nigel Potter) – Shanty group lead - email: [silveralto@gmail.com](mailto:silveralto@gmail.com)





## The Shutterist's:



We leave, what I would call, a cold January and enter February looking forward to warmer temperatures and hopefully 2023 avoids a Siberian Freeze.

Only one outing in January for the Shutterists but the weather was exceptionally kind, cold yes but dry with huge, big blue Suffolk skies.

### (1). Group Outings (The Photo Walk):

Lackford Lakes – Wednesday 18<sup>th</sup> January

<https://www.suffolkwildlifetrust.org/lackford-lakes-visitor-centre>

An event attended by 5 Shutterists – squeezing into one car and David Haylock passed mustard as the days Chauffeur (Heated Rear Seats – somebodies doing well!!!)

### Example images below

**A Shower of Gold**  
Bob Darts



**Coming in to Land**  
Stewart Haile



**In the Borogoves**  
Graeme Hale



**Robin**  
Grahame Andrews



**Snipe you like!**  
David Haylock



Neil Rowe, who sadly could not make the trip, kindly accepted the honour to judge the Lackford lake outing, and reported;

*'Stewart,*

*I'm afraid I have little to comment on regarding all the photo's as I thought they were all excellent. To choose a winner I have just chosen the one I like to look at which is the **one of the Snipe**.*

*Sorry it's short but excellent photos.*

*Neil'*

Thus, the winner was 'David Haylock'

**Congratulations to Dave, his first win for the Terry Knight Trophy** (and probably only his second entry)

Brilliant image captured - and so appropriate.

And finally, and as it is very traditional now that we Shutterists break bread together on our outings – luncheon was the culinary delights of Colonel Sanders



## (2). February Outings

**Heritage Trail - Friday 17<sup>th</sup> February 2023 - Location Kings Lynn**

<https://www.norfolk.gov.uk/-/media/norfolk/downloads/out-and-about/norfolk-trails/nar-valley-way/kings-lynn-historic-town-walk-2-miles.pdf>

Currently, event will be attended by 8 Members of the Shutterists, plus one keen Camera Phone Operator. However, everyone will be welcome – let me know if you're interested and I will confirm location when announced.

## (3). 2022 - 52 Week Capture Challenge

I am afraid IT issues still delay scoring and results. Hopefully will now be published in March and April edition of WMS Journal. I do promise, however, that it will be worth the wait.

## (4). 2023 – Monthly Challenge

The 12-month WMS Artistic Challenge takes place as a tribute to **Terry Knight**, one of our original photo group members who sadly passed away in 2019.

### Month 1 – January

The monthly challenge is based on a twelve-letter word that includes different letters - first letter will be January 2nd February, etc... The Challenge then is to use that letter for your entry. EG: If it was M, you have free choice of any subject matter that starts with M – Menu, Meal, Motor Car, Mosaic, etc, etc... (Please no entries like 'My Dog, My Car')

WMS Artistic Talent to submit their entry(s) by no later than the 3<sup>rd</sup> of every month.

### Photographers:

Entry(s) can be one colour and / or one black & white – can be different photo or same.

### Other mediums:

WMS artistic talent (in other 'Art Forms' such as charcoal sketch, water-colour, acrylic, pottery etc...) choose your word and enter accordingly.

All members of the Shutterists, whether entered that month or not, get six votes and choose their favourite three entries. Awarding Gold (3 points), Silver (2 Points) and Bronze (1 Point). Voting closes by the 7<sup>th</sup> of said month.

Each month I will issue the next letter from the 12-letter word I have.

Entry should be taken or made in that previous month.

This should get your creative juices flowing, deciding how best to meet the challenge and you also get to give your work(s) a title / name.

It's for fun... but it is a challenge.

## THE LETTER FOR JANUARY WAS: 'A'

For the January challenge – 5x photographers entered one times colour image each.

**1. Afterglow**  
Graham Hale



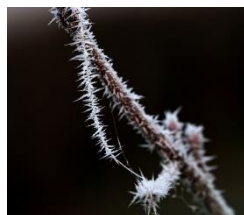
**2. Atmospheric Avenue**  
Grahame Andrews



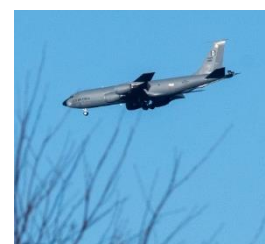
**3. Animal Frozen Duck**  
John Pepper



**4. Acer with frost**  
Neil Rowe



**5. Aeroplane**  
Stewart Haile





# The Shed Journal



And five times photographers entered 1x B&W image each.

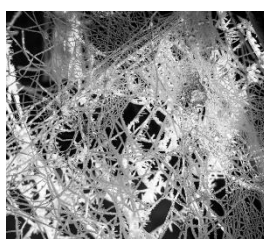
**6. Apples**  
Graham Hale



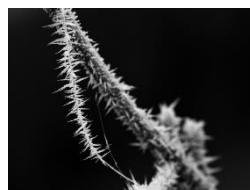
**7. Atmospheric Avenue**  
Grahame Andrews



**8. Animal A Spider Web**  
John Pepper



**9. Acer with frost**  
Neil Rowe



**10. Asprilla**  
Stewart Haile



And the winners are:

AWARDS		TITLE	Photographer	Entry	Medium	Month	Letter
GOLD	15	Apples	Graeme Hale	6	B & W	Jan	A
SILVER	5	Animal - Spiders Web	John Pepper	8	B & W	Jan	A
BRONZE	4	Asprilla	Stewart Haile	10	B & W	Jan	A

Congratulations to all the inners – especially Graeme for his high scoring entry - Apples.

What's coming up for the Shutterists...

- February outing - Kings Lynn: River walk and Heritage Trail – Friday 17<sup>th</sup>.
  - Anybody interested – let me know.
- More ad-hoc trips (maybe)... watch your inbox and / or the Shed Notice board
- Monthly Challenge – February will be the Letter 'M'.
- 'Photography as an artform'

**Presentation by Bob Darts – at the Dragonfly Gallery**

**Date: 7<sup>th</sup> March.**  
**Time: 10:30 -12:00**

**Ticket Price: £ 8.00**

**All proceeds will be donated to Wayland House**

PHOTOGRAPHY AS AN ART FORM  
A talk by Rob Darts (LRPS)

Can photography itself ever be described as an art form? If so where does "creativity and seeing" fit into the mix?

Join Rob for a fascinating look into photography as an art form.

7 March 2023, 10-30 - 12.00  
Refreshments available.

dragonflygallerywayland@gmail.com

Dragonfly Gallery  
Wayland House  
High Street  
Watton  
IP25 6AR

£8

Rob will donate all proceeds to Wayland House

**An aide memoir re the WMS Shutterists**

As a reminder to all shedders, The WMS Shutterists are predominantly an 'Artistic Group,' however cameras / pencils / paints are not a pre-requisite for trips out. The Shutterists welcome all fellow members of WMS to come and enjoy our outings. It is generally a good walk in beautiful East Anglia, maybe with the odd coffee, beer, wine, lunch, dinner thrown in for goodwill.

Join the Shutterists, which is huge fun, and allow those creative juices to flow...

Interested? Contact [Stewart Haile](#) - Shutterist's group lead - 07775 694099 - email: [shaile33@aol.com](mailto:shaile33@aol.com)





## Car Pub Club:

**Event Number 1: Thursday 26th January 2023 at 12:30**



## Summary

The Anvil was the perfect choice for the inaugural WMS Car Pub Club event. Location, food, service, and value for money were all rated highly.

I am sure all attendees would recommend The Anvil to all their friends and relatives.

Just look at the scores from the fun 'Marks out of 10 game' that everyone entered into the spirit of where...

Name of Establishment:		The Anvil Inn - Congham					
Time and Date of Visit:		12:30 on 26th January 2023					
Number of WMS Members / Partners:		9					
Car Scores	165 out of a possible 180	91.67%					
Pub Scores	252 out of a possible 270		93.33%				
	Enjoyable Drive	Distance & Parking	Menu & Price	Food Quality	Service	Total Average Score	Overall Car Pub Club Rating
Avg Scores	9.1	9.2	9.6	8.7	9.5	46.1	<b>92.20%</b>

*A great meal scores a 9 or 10, a bad meal it's a 2 or 3. You can see that the total score is weighted by both the car parameters and the eatery – by definition a 'Car Pub Club'.*

The Anvil scored high across the board. Can it be beaten?

## Event Number 2: Thursday 2nd March 2023 at 12:30

With the un-rivalled success of event 1 at the Anvil in Congham – we look to event 2

As previous, there is a choice of three establishments.

Please let me know if you have a preference and a decision can be made on the majority choice.

## The Three Options are:

Options	1	2	3
Venue	The Dabbling Duck (Pub)	The Recruiting Sergeant (Pub)	Nelson Head (Pub)
Address	Great Massingham PE32 2HN	Horstead NR12 7EE	Horsey NR29 4AD
Return mileage	40 Miles	54 Miles	88 Miles
Typical cost for main course	£ 18:00	£ 20:00	£15:00

**NOTE:** All above based on Venue accepting our final booking  
Final decision will be made by no later than 23rd February 2023

For those of you (and partners) that are interested, please email me direct or alternatively add your name to WMS notice on board in the bowls room.

Please let me know; **Number of people** - **If you wish to car share** - **Establishment preferred.**

## Aide memoir – The WMS Car Pub Club

Open to all WMS Members - whether they drive or not as I am sure there will be enough passenger seats. In addition, members wives and partners are very much welcome to join us on our Car Pub Club outings.

Any questions / suggestions, please feel free to come back to me.

**Interested?** Contact [Stewart Haile](mailto:Stewart.Haile@bt.com) - Car Pub Club lead - 07775 694099 - email: [shaile33@aol.com](mailto:shaile33@aol.com)





## Other News, Notices, Events & Interesting Articles:

### First Aid Courses:

We are arranging for 2-hour workshops for members in the near future. These courses will be run by the British Red Cross, and we would like as many members as possible to attend one of these workshops. See the notice for more information on what will be covered. All the technical/clinical language has been removed to ensure that it is easy to learn and easy to remember in an emergency.

### A Lidl story about Watton

Were you among the many inhabitants of Watton eagerly awaiting the opening of a new branch of the German supermarket on the 26<sup>th</sup> of January?

Well, my wife Chas was quite a few of you know that she works in Tesco and was very keen to check out (sorry about the pun) the "opposition". I personally have no interest whatsoever in supermarket shopping and am quite content to let Chas do it while I get most things I need on the internet.

She didn't go on the first day of opening as she thought it might be a bit manic but went on the next day. First impressions were good, fair sized car park with nice wide parking spaces and a reasonable layout although no direction markings as yet which made things a little confusing.

Plenty of trolleys but a bit of a surprise for non-regular Lidl shoppers is that you need a pound coin or a token (surprisingly not supplied by Lidl!). Inside the store it is very bright, but the aisles are narrow.

Submitted by [Les Waller](#)

We had heard that the bakery in Lidl is very good, there was very little selection at 11.30 am (perhaps it had all gone?).

Chas was not doing the weekly shop but noticed some things were more expensive than Tesco e.g., milk, the brand of coffee that we drink. A couple of items we bought, and thought were very poor compared to Tesco were the sourdough bread and the chunky soup.

A couple of items we thought were better than Tesco were the raw beetroot and the thick ham. The middle aisle was very good if you are into DIY, unfortunately I'm not. But there were other items that looked very good value.

As with all these things it's a case of swings and roundabouts, two weeks ago Tesco was deserted for a couple of days but this weekend it was virtually back to normal, time will tell.

### Royal Mail Stamps: **\*\* Important update \*\***

This is the continued reminder to use up your old Royal Mail stamps on or before the **31<sup>st</sup> July 2023**. The old deadline of 31<sup>st</sup> January has been extended by the post office.

Old non-barcoded stamps will no longer be valid after that date. Stamps up to the value of £200 may be returned to Royal Mail for a 'Swap-Out'. Pictorial stamps are exempt.

There are 3 ways to swap-out old stamps.

1. Print out the form from Royal Mail's website.
2. Phone Royal Mail 03457 740740 and ask for a form.
3. Post office OR delivery office, pick up a swap-out form.

### Examples of stamps you must use or swap:



### Examples of stamps you may still use:





## Babes in the Wood

Deep in the woods a secret is hidden.  
Do not enter even if bidden.  
A jealous uncle a guardian was made.  
This man's life was in darkness and shade.

Two gentle babes' parents had died.  
"I will care for them" the uncle lied.  
He wanted their money and plotted their end.  
For his shifty servants he did send.

He bade them take the children deep in the woods.  
And to cover their heads with bonny bright hoods.  
Deep into Wayland wood they did head.  
"Do not speak" the servants said.

The babes where scared and full of fears.  
They silently cried steams of tears.

Submitted by [Wayne Rutter](#)

They reached an oak deep in the trees.  
The children were made to rest on their knees.

The servant raised the knife to do the crime.  
But his partner stopped him just in time.  
"If we kill these children, to hell we will go."  
He bloodied his knife on a dead bird just for show.

They left the babes helpless and headed back.  
The uncle paid them by giving them the sack.  
He went mad and lost the house.  
He became as poor as a church mouse.

The babes became lost, and they could not eat.  
They walked until they had tiny sore feet.  
Laid within each other's arms they passed away.  
Their spirits haunt the wood to this day.

## What does Watton Library have for you?

You can now enjoy:

- Books, eBooks, and audio books
- DVD's
- Computers
- Free wi-fi
- Our range of activities and events
- Open library – access services outside usual opening hours

Reading:

### We have thousands of books!

Borrow up to 15 books at a time for up to three weeks for free. Browse our extensive catalogue here <https://norfolk.spydus.co.uk> and reserve items you want.

You can use your library card at any library and return items to any library.

You can sign up for email reminders to help you return items on time.

We support people to learn to read, just ask for details.

You can borrow eBooks, emagazines and audio books online. You can sign up with your library card here.

[www.norfolk.gov.uk/ebooks](http://www.norfolk.gov.uk/ebooks)

We have free Wi-Fi access and desktop computers in all libraries which you can use free of charge.

Community.

Our libraries are community spaces where you can meet friends – and make new ones!

Activities include:

- Baby Bounce and Rhyme time
- Knit and natter.
- Games club

Volunteering:

We have lots of opportunities across our services for volunteers. Whether you want to help organise activities, assist adults learning to read or help with children's events.

Find out more here: [www.norfolk.gov.uk/libraryvolunteers](http://www.norfolk.gov.uk/libraryvolunteers)

We have meeting rooms to hire.

Best wishes,

Sheila Grainger, Library & Information Assistant

Submitted by [Jezz Hookham in conjunction with Sheila Grainger](#)



# The Shed Journal



## WMS Local Community Assistance Fund:

This is a fund of up to £500 per annum raised from specific fund-raising events such as Quiz & Chip nights and will **not** be from our main funds. It will be up to the membership to suggest worthy local causes, so if you have a proposal, it should be submitted to the committee for consideration.

**NOTE We have all but reached our limit for the 2022/23 shed year.**



## WMS Website:

Our website address is: [www.waylandmensshed.co.uk](http://www.waylandmensshed.co.uk).

Members are encouraged to visit the site and have a look around. The site is continually undergoing updates and our continued thanks go to Neil Rowe for his efforts. Constructive comments, suggestions or ideas for improvement and potential new content are very welcome. Just approach Neil or any committee member.



## UK Men's Shed Association (UKMSA):

If you want to know more about the UKMSA, **type** or, **cut and paste** this link into your address bar. <https://mailchi.mp/9864d9f4ae67/shoulder-to-shoulder-june-15550677?e=a370dbe526>



## Facebook:

WMS has a group page – currently with around 17 members:

[www.facebook.com/groups/5797251266956413](https://www.facebook.com/groups/5797251266956413)

**Note:** The above page should not be confused with a similar page, this was an earlier iteration from the days of our formation, this legacy page is **NOT** updated by the Men's Shed (**Please use the above link**).



## Business, Administration & Housekeeping matters:

### Shed Opening Times 2023:

Social Room and Workshop - Mondays and Wednesdays 09:00 till 12:00.

Computer Room - Mondays 09:00 to 12:00 - Thursdays 09:00 till 12:30.

### Housekeeping:

Please assist other members and the committee by keeping the shed tidy and helping with general chores.

### Treasurers Report:

*"I can report that the shed finances continue to remain steady. The generous lottery grant is without doubt assisting our continued stability. Your committee do as ever remain vigilant to changing market forces.*

*Full, yearly & monthly accounts may be examined, and any questions answered upon application to myself."*

[John Chamberlin](#) – Treasurer – email: [bjcoi8@gmail.com](mailto:bjcoi8@gmail.com)

### Memberships Report:

*"Membership numbers have now reached a heady 70. It remains clear that the word continues to be spread that the Men's Shed remains the place for men to be in Watton. So, let's all continue to welcome new members."*

[John Chamberlin](#) – Membership Secretary – email: [bjcoi8@gmail.com](mailto:bjcoi8@gmail.com)

### Your committee:





# The Shed Journal



Malcolm Trayhorn: Chairman, Social Sec & Press  
 Stuart Haile: Secretary  
 John Chamberlin: Treasurer & Memberships

Gordon Williams: Vice Chairman  
 Richard Adams: Workshop Supervisor

Jeffrey Heath: Tech supervisor  
 John Bunning: Tech assistant

## Committee meeting:

Next committee meeting is on Wednesday 1<sup>st</sup> March 2023 at 3pm in the Sports Centre.

Should any member wish to submit an item for discussion by the Committee please email your request direct to the Chairman. [Malcolm Trayhorn](mailto:malcolm.trayhorn@gmail.com) - email: [malcolm.trayhorn@gmail.com](mailto:malcolm.trayhorn@gmail.com)

The meeting welcomes 'observers' from the membership, they can submit questions and/or signal their wish to attend to the secretary no later than Thursday 23<sup>rd</sup> February 2023. [Stewart Haile](mailto:shaile33@aol.com) - email: [shaile33@aol.com](mailto:shaile33@aol.com)

## Committee note:

As the full meeting minutes are available for perusal in the minute book at the shed, a draft copy will not be individually distributed to shed members. However, should any member require an e-copy, they may request the same on application to the Secretary.

## Health & Safety:

It is important that we know how many members are in attendance at all times. **Please ensure that you visit the Main Hall to sign-in and out, do not just go to the Workshop/Computer rooms.**

All members have a duty of care for themselves and others whilst on the premises. Should you become aware of any issues please ensure that you inform a committee member at once. All accidents and Incidents should be recorded in the ledgers provided; they are located in the filing cabinet in the workshop.

## Wanted, For Sale & Free Notices:

Do you have an item for sale, for free or are you looking for something in particular? Please feel free to email the editor - [bjcoi8@gmail.com](mailto:bjcoi8@gmail.com) with a price, picture, also include a brief description of the item along with your contact details. I shall endeavour to list the item here.

**Note:** All transactions are strictly between two parties. WMS does not endorse nor guarantee any items sold.

### Free:

"8-12 new **Autumn Bliss** Raspberry canes.  
 Available free to a good home.

For more information:  
 Contact: Jez Hookham  
[jezhookham@btinternet.com](mailto:jezhookham@btinternet.com)



### For Sale - Wheelchair - £30

Foldable, lightweight wheelchair with cushion.

For more information:  
 Contact: John Chamberlin  
 01953 886892 – 0788 6655713  
[bjcoi8@gmail.com](mailto:bjcoi8@gmail.com)



### For sale – Storage boxes - £30 for 4

4 x Plastic stackable wheeled storage boxes.  
 Approx 3' x 18" x 18".  
 One has broken latches.

For more information:  
 Contact: John Chamberlin  
 01953 886892 – 0788 6655713  
[bjcoi8@gmail.com](mailto:bjcoi8@gmail.com)





# The Shed Journal



## Solutions

**Joke:** One's really heavy, the other is a little lighter. 😊😂😂

**Puzzle:** 'Sweet Caroline' released by American singer/songwriter Neil Diamond in 1969.

**Who?** **Julius Caesar.** Crossing the Rubicon in 49 B.C. he began a civil war that would end the Roman Republic.

**Where?** **Western Pacific Ocean.** It is approximately 6½ miles deep, the world's deepest location.

**Why?** **Issued in 1215,** it put into writing the principle that the King and his government were not above the law.

**When?** **1871.** James Starley, a British engineer invented the Penny-Farthing. Popular till the late 1880's.

**Which?** **Wild Bill Hickok.** Aug 2<sup>nd</sup>, 1876, Deadwood, South Dakota, shot holding this poker hand by Jack McCall.

**What?** **Confluence.** Derived from Latin 'confluere' or 'flow together'.

**That's odd:** **Edward Rochester.** The others are characters from Dickens novels.

**Next in line:** **Johnson.** American presidents going forward since 1929.

**MIA:** **Huron.** They are the Great Lakes of North America, a series of large interconnected freshwater lakes.

Please visit our website: [www.waylandmensshed.co.uk](http://www.waylandmensshed.co.uk) which is regularly updated.

You can also contact us via email: [waylandmensshed@gmail.com](mailto:waylandmensshed@gmail.com)

If you wish to make a compliment, complaint, or comment, please feel free to do so. Without constructive feedback it is very difficult for the WMS Committee to know if they are meeting member's expectations.

**Disclaimer** - The information contained within The Shed Journal is for general information purposes only and assumes no responsibility for any errors or omissions in the content. In no event is the editor or other members of WMS liable for special, direct, indirect, consequential, or incidental damages arising out of or in connection with the content. We reserve the right to make additions, deletions, or modifications to the contents at any time without prior notice. Any views or opinions either explicit or implied are NOT the views or opinions of either the Wayland Men's Shed or the editor.

